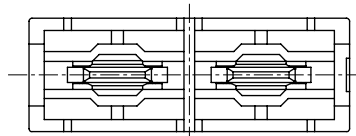
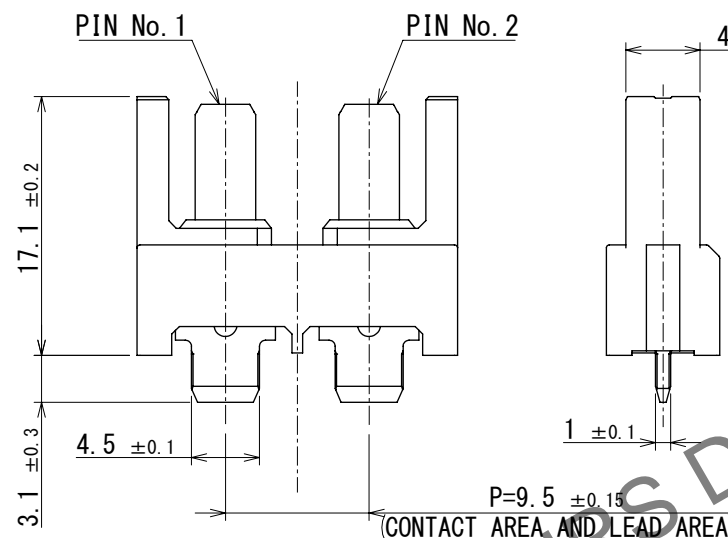
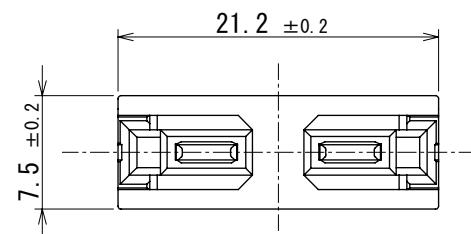


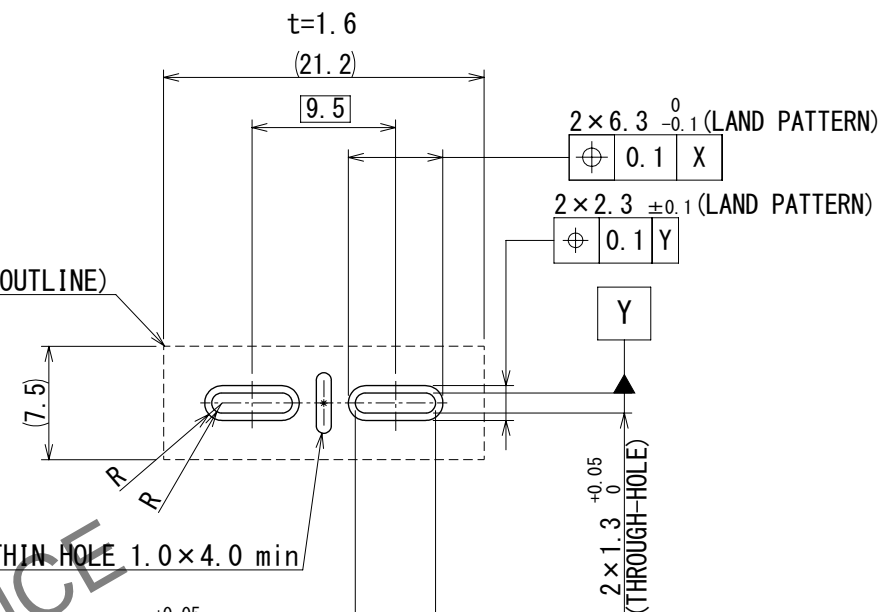
Dec.1.2025 Copyright 2025 HIROSE ELECTRIC CO., LTD. All Rights Reserved.  
In case of consideration for using Automotive equipment / device which demand high reliability, kindly contact our sales window correspondents.

ELV, RoHS COMPLIANT



CONNECTOR MOUNTING SPACE (OUTLINE)

3 RECOMMENDED LAND PATTERN DIMENSION OF PCB



4 LONG THIN HOLE 1.0x4.0 min

2 PCB DISTANCE

1 FX31-2S-9.5SV  
(MATING CONNECTOR)

FX31-2P-9.5DSA20

- 注 1 The maximum floating amount in the XY direction of the mating part is  $\pm 0.5$ mm.  
The maximum cycle time of the floating operation is in accordance with the mating cycle of the connector.  
2 Please use the connectors within the specified PCB distance.  
3 The creepage distance between the recommended land patterns is 3.2 mm. (when there are no long thin hole)  
4 When applying IEC60664-1 pollution degree 2/voltage value 800V, please make a long thin hole as shown in the figure (Creepage distance 4mm or more).  
Or please use a coating agent to strengthen the insulation.  
5 Blemish and hit mark can be occurred through out the manufacturing process which doesn't affect quality level.  
6 The dimensions in parentheses are for reference.  
7 This is packaged in tray. (1260 pcs/Box)  
8 This connector has no polarity with the mating connector.  
9 Reflow heating may cause the blister to the product resin surface, so please ensure that the peak temperature during reflow does not exceed 250° C on the connector surface.

【In Regards to Design Guideline】

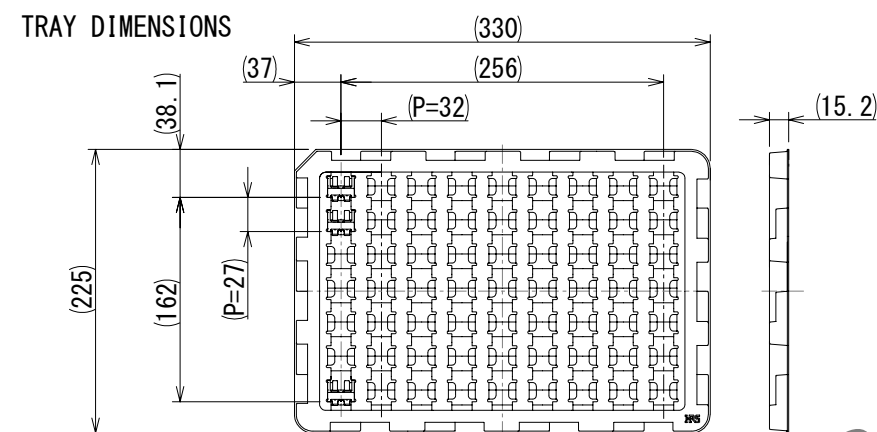
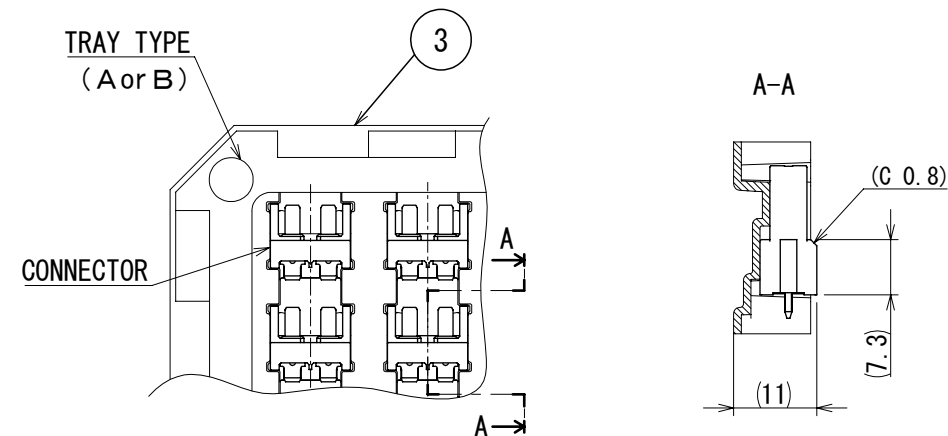
To provide more information in regards to the usage of this product,  
we have prepared a detailed manual (ETAD-F1008-00).  
Please contact our sales representative if need.

2	COPPER ALLOY	CONTACT AREA : GOLD PLATING 0.1 $\mu$ m min. LEAD AREA : TIN PLATING 3 $\mu$ m min. UNDER PLATING : NICKEL 1 $\mu$ m min.			
1	POLYAMIDE	BLACK	3	POLYSTYRENE	TRAY
NO.	MATERIAL	FINISH , REMARKS	NO.	MATERIAL	FINISH , REMARKS
UNITS mm		SCALE 2:1	COUNT 0	DESCRIPTION OF REVISIONS	DESIGNED CHECKED DATE
		APPROVED : HH. SHINDO	2025. 05. 19	DRAWING NO.	EDC-401171-00-00
		CHECKED : KT. DOI	2025. 05. 19	PART NO.	FX31-2P-9.5DSA20
		DESIGNED : TK. ABE	2025. 05. 19	CODE NO.	CL0571-2001-0-00
		DRAWN : AN. SAIKI	2025. 05. 19		

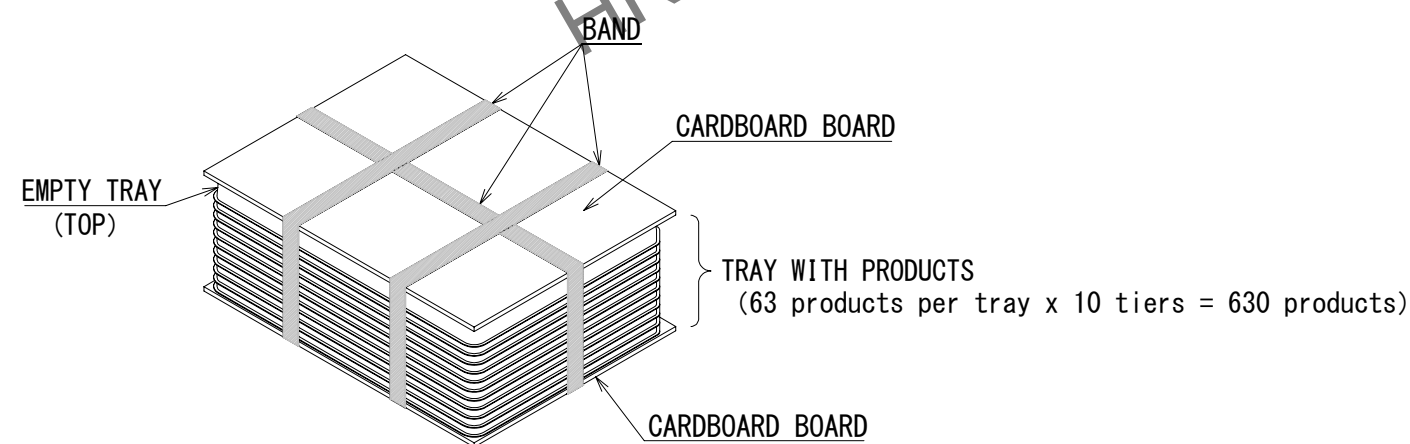
Dec.1.2025 Copyright 2025 HIROSE ELECTRIC CO., LTD. All Rights Reserved.  
In case of consideration for using Automotive equipment / device which demand high reliability, kindly contact our sales window correspondents.

## 7 TRAY DRAWING FOR PACKING (No scale)

- (1) The connectors are put in the tray as shown in the figure below.  
(See the figure below for the connector position.)



- (2) The trays are stacked in 11 layers and tied together into a bundle. (The top tray is an empty tray)  
Tray types A and B are stacked alternately.



If tray A is stacked to another tray A or tray B is stacked to another tray B,  
load may applied to the connector, causing the deformation or breakage of the connector.  
When storing, please stack the trays alternatively (tray A, tray B, tray A, tray B, tray A...)

- (3) Two bundles are placed in a cardboard box and then covered with a cardboard board.

