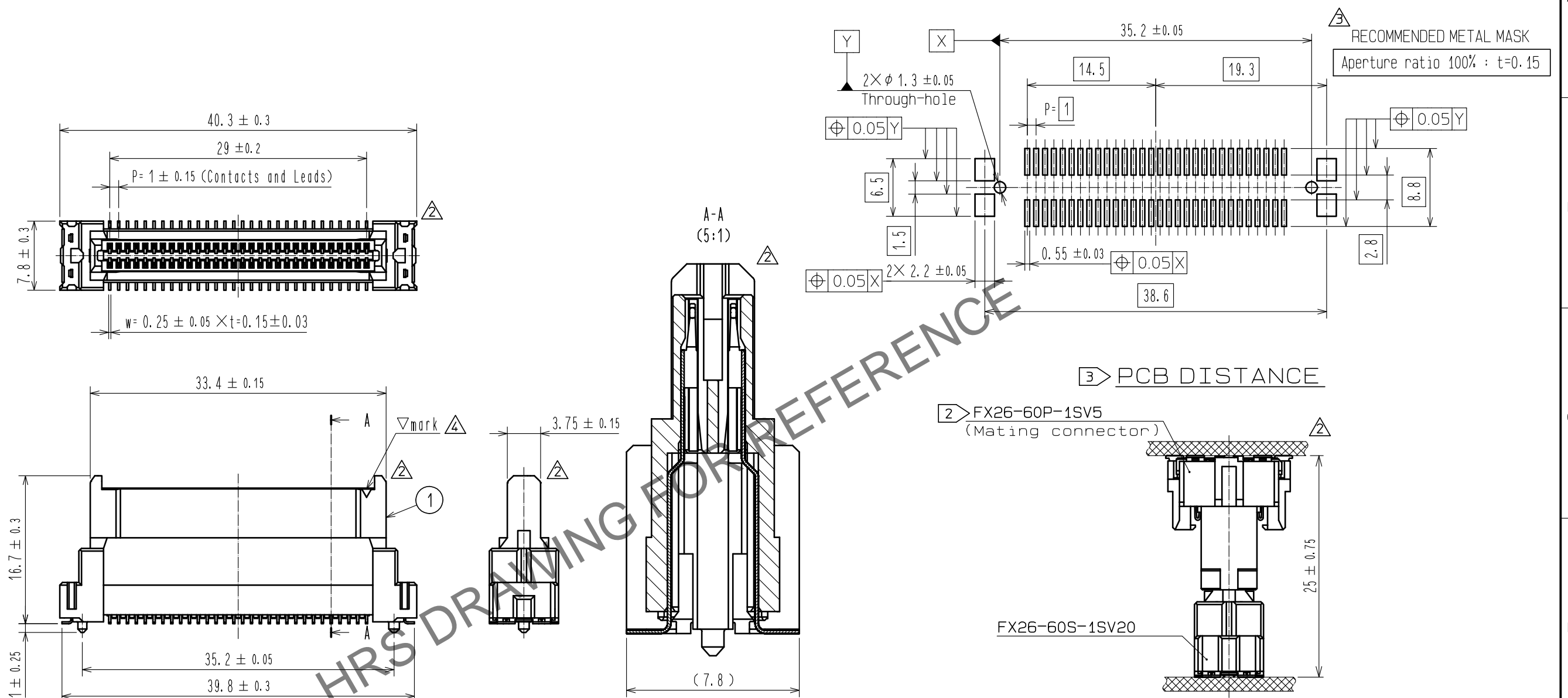
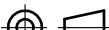






RECOMMENDED LAND PATTERN DIMENSION OF PCB



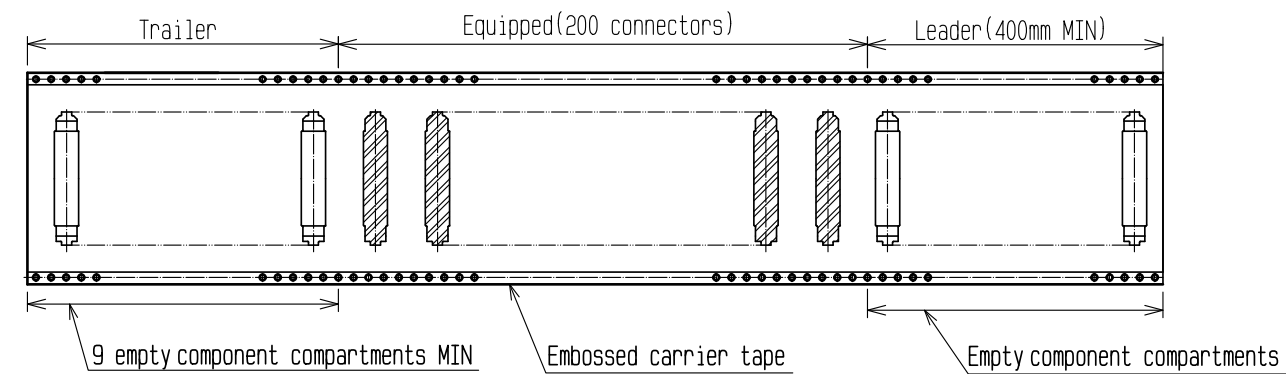
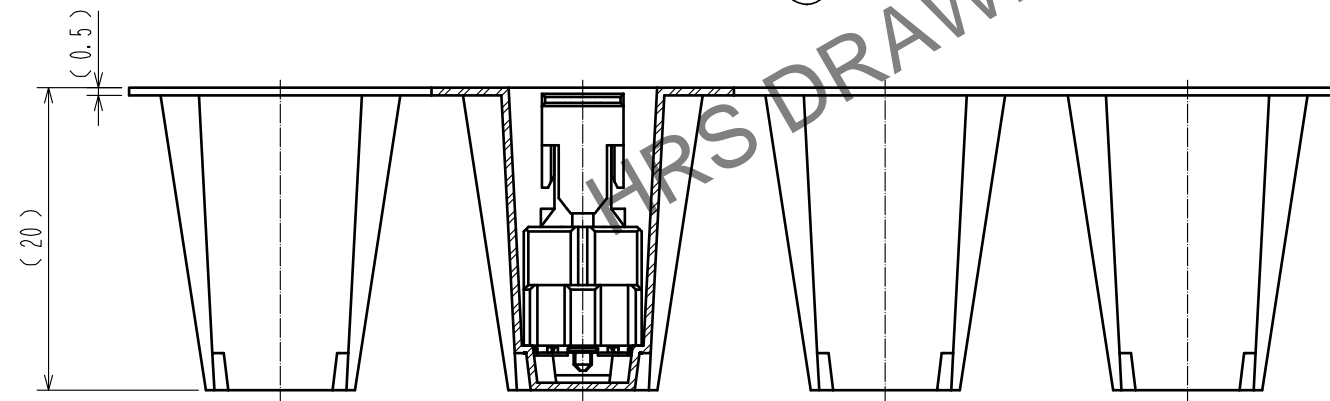
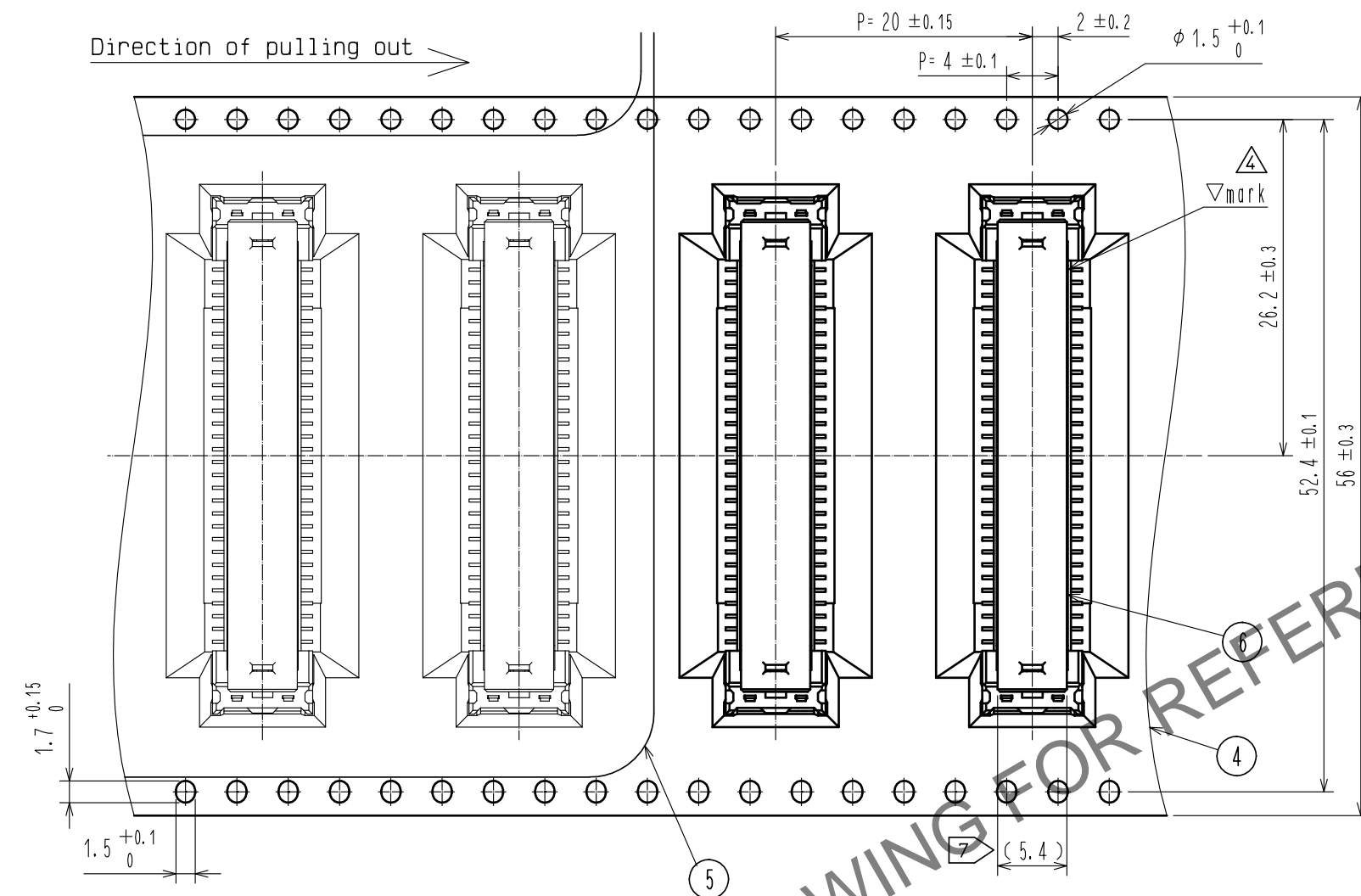
- Note
- 1 Lead CO-Planarity is 0.1mm MAX.
 - 2 Floating range of the mating connector is ± 0.7 mm MAX.
The maximum cycle time of the floating operation is in accordance with the mating cycle of the connector.
 - 3 Please use the connectors within the specified PCB distance.
 - 4 Blemish and hit mark can be occurred through out the manufacturing process which doesn't affect quality level.
 - 5 The dimensions in parentheses are for references.
 - 6 This is packaged in embossed carrier tape. (200pcs/RL)
 - 7 It shows the vacuum pickup area.
Remove the pickup cap before mating connectors.
 - 8 This connector has no polarity with the mating connector.

6	POLYAMIDE	(CAP FOR VACUUM PICKUP)
5	POLYESTER	(EMBOSSED COVER TAPE)
4	POLYSTYRENE	(EMBOSSED CARRIER TAPE)
3	PHOSPHOR BRONZE	OVER PLATING :TIN-PLATING $1\mu\text{m}$ UNDER PLATING:NICKEL $0.5\mu\text{m}$
2	COPPER ALLOY	CONTACT AREA :GOLD $0.1\mu\text{m}$
		LEAD AREA :GOLD $0.03\mu\text{m}$
		UNDER PLATING:NICKEL $1\mu\text{m}$

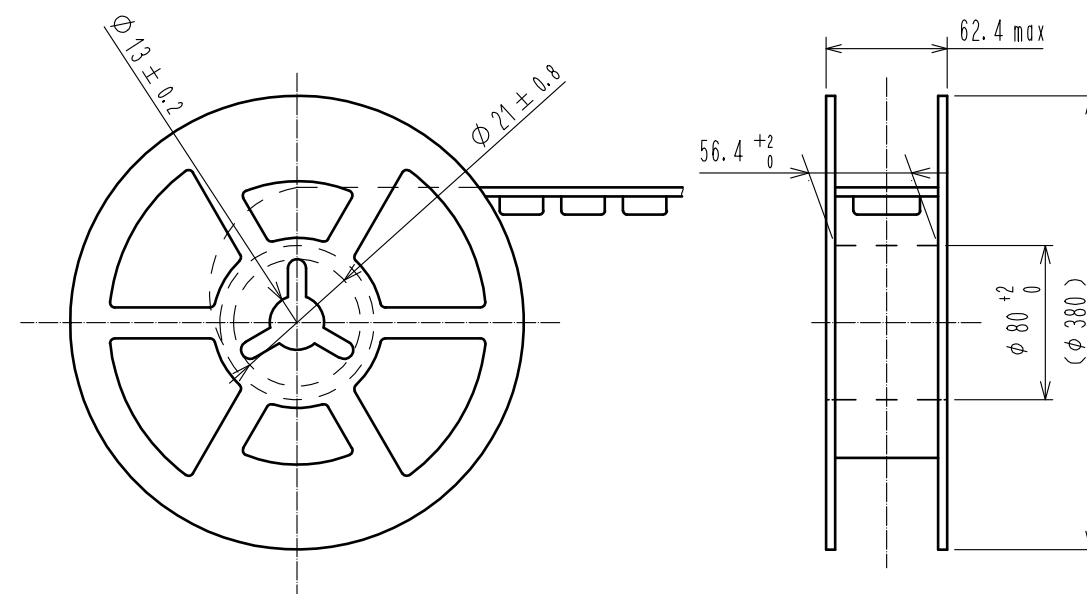
1	POLYAMIDE	BLACK UL94V-0		2	COPPER ALLOY	LEAD AREA COVERED 0.05mm			
NO.	MATERIAL	FINISH . REMARKS		NO.	MATERIAL	UNDER PLATING:NICKEL 1μm			
UNITS mm				SCALE 2 : 1	COUNT  2	DESCRIPTION OF REVISIONS DIS-F-00006551	DESIGNED KI. YAMAZAKI	CHECKED KN. SHIBUYA	DATE 20200831
 HIROSE ELECTRIC CO., LTD.				APPROVED : HH. SHINDO		20190719	DRAWING NO. EDC-376652-00-00		
				CHECKED : KN. SHIBUYA		20190718	PART NO. FX26-60S-1SV20		
				DESIGNED : TK. ABE		20190718	CODE NO. CL576-1306-0-00		
				DRAWN : TK. ABE		20190718	 1  2		

Nov.1.2025 Copyright 2025 HIROSE ELECTRIC CO., LTD. All Rights Reserved.
In case of consideration for using Automotive equipment / device which demand high reliability, kindly contact our sales window correspondents.

6 DRAWING FOR PACKING(2:1)



REEL DIMENSION(No scale)



HR5

DRAWING NO.	EDC-376652-00-00
PART NO.	FX26-60S-1SV20
CODE NO.	CL576-1306-0-00

4 2/2